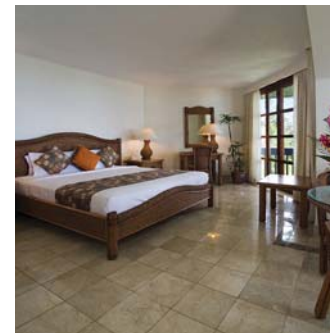
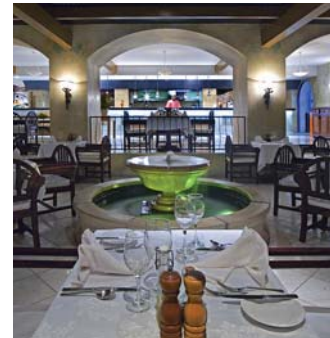


Warwick Fiji Resort & Spa

Coral Coast, Korolevu, Fiji

T: +679 653 0555 F: +679 653 0155

www.HotelClub.com/hotels/Warwick_Hotel_Fiji_Leti_Levu_Island



As with most Fiji resorts, there are pluses and minuses about the 20-something-year-old Warwick - summed up by the fact that it is a good 90 minutes' coach ride from Nadi airport (it is midway between Nadi and the capital, Suva). This can be a drag after a long international flight - especially since ground transport is not always smoothly synchronised with air-arrival times - but it also means that you won't be bothered with the overhead jet roar that afflicts some of the easier-to-reach hotels.

Likewise, against the resort's long experience in perfecting its product must be set the wear and tear its facilities, including the rooms, have undergone over the past couple of decades. Accommodation is Ocean View, Mountain View or Warwick Club (with its own lounge) and all 248 rooms and suites have aircon, satellite TV (including Sky) and mini-bars. The beach is man-made, but snorkelling off the coral reef is

good - and free.

Pricing is a bone of contention with some guests - almost all activities come with a charge. But there again, there are plenty of them - tennis, squash, mini-golf, archery, horse-riding, diving, bay or game fishing, glass-bottom boat trips, helicopter rides, and champagne cruises. Wine is expensive, but you can drink as much as you like on an all-inclusive meals plan.

There are four restaurants: the Café Korolevu (which does a themed buffet in the evenings); Wicked Walu, a surf'n'turfery on an adjoining islet; the Italian Pappagallo and Japanese Sazanami. The Suva and Nadi wings have their own pool bars, or you can sip a sundowner at the Sunset Bar. The Hibiscus Nightclub has live music four nights a week - but bring your own CDs if you want to supplement the resident DJ's rather sparse collection.

All the old Fiji favourites can be

found - from a kids' club to wedding packages to firewalking shows on the beach and kava-drinking ceremonies. A new spa and gym opened in 2006. The most popular excursion is to the nearby waterfalls. Oh, and when you return home, you'll receive a personalised postcard thanking you for your stay.

Rates from: **\$\$\$\$\$**

Star rating: **★★★★½**

Overall rating: **4.3/5**

Ambience : **9.00** Cleanliness: **9.16**

Value: **9.13** Facilities: **8.49**

Staff: **9.61** Restaurants: **9.20**

Location: **9.07** Families: **9.45**

